

## What is the WWMD?

The Waterford Waterway Management District (WWMD) is a special unit of government representing approximately 1000 residents of the Waterford area who own property on the waterway, known as riparian owners. We are regulated by Chapter 33 of the Wisconsin State Statutes and our mission is to “Maintain, protect, and improve the quality of the Waterford Waterway, its fisheries, its watershed, and boundaries; while maintaining the highest possible quality of living experience for its residents.”

There are 7 commissioners who are responsible for leading the district as well as other members working on a variety of committees and projects. The commissioners and committee members are unpaid volunteers most of whom own property on the waterway.

Today the district focuses on three major areas: Aquatic Plant Management (controlling weeds), Special Projects (stopping runoff) and the EcoSystem Restoration Project (dredging).

### AQUATIC PLANT MANAGEMENT COMMITTEE

The Aquatic Plant Management (APM) Committee is responsible for managing the aquatic plant growth, both Invasive and Indigenous, throughout the waterway. Effects of the seasons, floods, droughts, heat waves and dam levels affect the Aquatic Plant population in different ways. It is the role of the APM Committee to explore, recommend and implement the use of all appropriate approaches possible to manage these changing conditions in a cost effective manner.

### SPECIAL PROJECTS COMMITTEE

The Special Projects Committee focuses on problem areas in the waterway where runoff is causing erosion and adding silt to the waterway. Visit our website for a map and list of projects: [waterfordwwmd.com](http://waterfordwwmd.com).

### ECOSYSTEM RESTORATION PROJECT

The EcoSystem Restoration (ESR) Project is focused on re-establishing navigation in the main channel and access to the main channel in the Waterford waterway. There is more information about this project on the other side of this postcard as well as on our website.



Local  
Postal Customer

PRSR STD  
ECRWSS  
U.S. POSTAGE  
PAID  
EDDM RETAIL



*Waterford Waterway Management District*

*Post Office Box 416  
Waterford, Wisconsin 53185*

*[info@waterfordwwmd.com](mailto:info@waterfordwwmd.com)  
[waterfordwwmd.com](http://waterfordwwmd.com)*



# The Dredging Project - What's going on?

The goal of the EcoSystem Restoration (ESR) Project is to re-establish navigation in the main channel and access to the main channel. There are three steps to accomplishing this goal:

- Dredge: Get the sediment out of the river
- Dewater: Get the water out of the sediment
- Distribute dewatered sediment for beneficial use

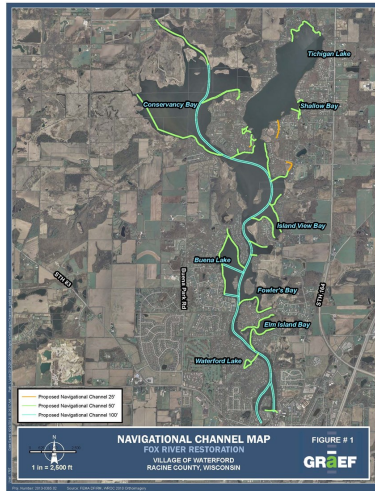
## WHERE WOULD WE DREDGE?

Navigational channels as well as a sediment trap in Conservancy Bay.

## WHY NOT DREDGE THE ENTIRE WATERWAY?

The Wisconsin Department of Natural Resources has authority over many aspects of the ESR project and will have the final authority to approve a permit for the project. The WDNR has limited the project to dredging of navigational channels only.

In addition, dredging the navigational channels alone represents 480,000 cubic yards of sediment which is a large dredging project expected to take 3 or more years.



## HOW DO YOU DRAIN THE WATER OUT OF THE SILT?

There are 3 methods for dewatering, from least to most expensive:

- Settling pond: Place silt on land close to point of dredging, letting the water drain. This is the planned approach for the ESR project.
- Geotextile tubes: Fill tubes with sediment and allow the water to drain through the fabric of the tube.
- Mechanical: Squeeze the water out of the sediment.



## WHERE DO WE PUT THE SEDIMENT?

There are several options including: Fill (on dewatering sites, if possible), Sand and gravel site reclamation, Farm amendment, Topsoil for commercial, industrial, and highway use. Our approach would be to identify large users within close proximity to the project to keep costs low.

## HOW MUCH WILL THE PROJECT COST?

Graef Engineering, LLC has been hired to assist the WWMD in engineering and planning of the ESR project. They estimate that the project will cost between \$8.4M and \$10.4M over three years.

## HOW WILL WE PAY FOR THE ESR PROJECT?

The most desirable option is the Scenic Urban Waterways Law. Wisconsin statute 30.275 designates our waterway as a Scenic Urban Waterway and places responsibility for improving it for recreational use in the hands of the Wisconsin Department of Natural Resources (WDNR). The WWMD believes the ESR project should be managed and funded by the WDNR

through this law. However, the WDNR has not requested funding to support the law in the past and they are not currently planning on funding the law or the ESR project.

Another option for funding is through grants. There are government, private, and corporate grants available but they are time consuming and labor intensive to apply for and administer. They also generally require the organization have matching funds and be ready to start the project before you can apply.

The least desirable option to fund the project is through riparian owners. The WWMD could ask the riparian owners to vote on funding the project through a special assessment. This vote would occur at an annual or special meeting of the WWMD.

The WWMD believes the WDNR is responsible for the EcoSystem Restoration project. We need the support of our public officials to encourage the WDNR to step up to funding the project during their upcoming budget process. We are asking residents in the area who are registered to vote to write the key public officials: Wisconsin State Senator Mary Lazich, Wisconsin State Representative David Craig, Wisconsin Governor Scott Walker, and Wisconsin DNR Secretary Cathy Stepp.

We have letters written to each and complete contact information available at [waterfordwwmd.com](http://waterfordwwmd.com).

## WE NEED YOUR SUPPORT!

If you are a registered voter, please print the letters, sign them, include your printed name and address and mail them today.



Send letters to our public officials today!  
You'll find everything you need at [waterfordwwmd.com](http://waterfordwwmd.com)